

Opus Downloader Tool User Manual

Table of Contents

[Introduction.....1](#)
[Hardware and Software Requirements:1](#)
[Folder Download and Setup.....2](#)
[Station Download Step-by-Step.....3](#)

Introduction

The Opus Downloader Tool is a self-contained, client-side program that allows the user to commission an XCM and download a station in the field without needing the full Opus software or a remote uplink to Novar. The downloader tool provides the following functionality:

- Commission a new XCM
- Backup and wipe an XCM that is already configured
- Download a station to an XCM from a distribution file
- Set the XCM IP addresses and subnet masks
- Set the station date, time, and time zone
- Set the FoxPort and FoxsPort for the station

Hardware and Software Requirements:

The following materials are required in order to use the Opus Downloader Tool in the field:

- Laptop/PC with an outlet for an Ethernet cable
- Ethernet cable
- Up-to-date sw, cleanDist, fullCommissionDistFiles, and platBOGs folders, saved to the laptop
- Station distribution file
- XCM license file

NOTE:



The above folders, station distribution (dist) file and license file will need to be downloaded from Novar.com prior to going on-site. Call Novar to request a station dist file and a license file if they are not available on Novar.com.

Folder Download and Setup

1. Navigate to the **C:** directory on your laptop (found under **Computer**)
2. Create a new folder in this location, and name it “DownloadTool”
3. Go to _____ and log into your MyNovar account.
4. Click on “Software Downloads”
5. Click on “sw”, select **Save**, and save to the “DownloadTool” folder created in step 2.
6. Repeat step 3 for “cleanDist”, “fullCommissionFileDist”, and “platBOGs”
7. Your “DownloadTool” folder should now look like the image below:

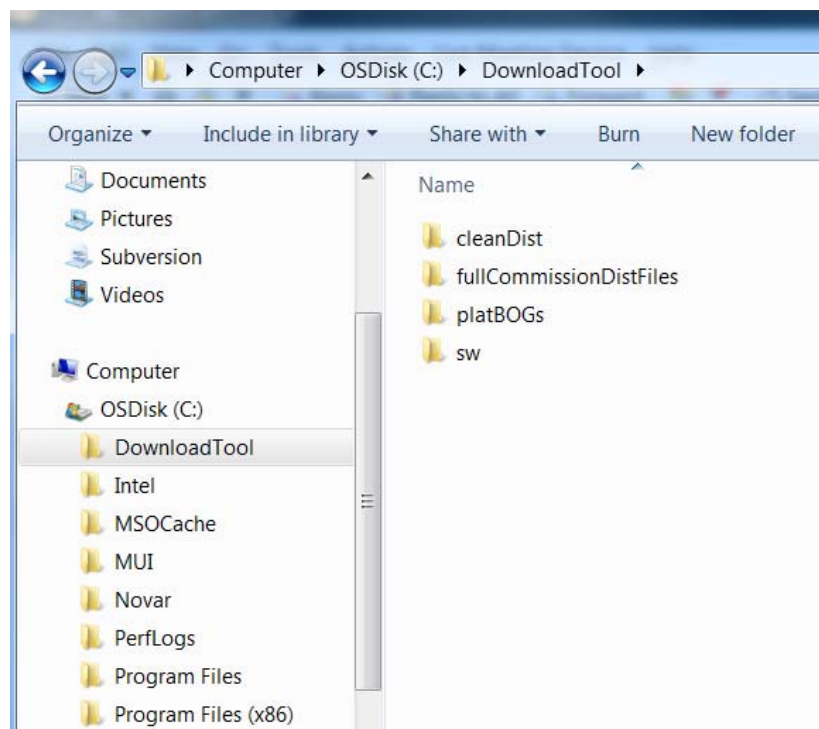


Figure 1: Completed folder setup

NOTE:



If the customer you are working for requires you to use another folder directory, create the “DownloadTool” folder in the folder directory specified by your supervisor.

Download Tool Initial Setup:

1. Go to _____ and log into your MyNovar account.
2. Click on “Software Downloads”

3. Click on “Opus Downloader Tool”, select **Save**, and save to the “DownloadTool” folder created above under **Folder Download and Setup**
4. Navigate to your “DownloadTool” folder and open the newly added folder “OpusDownloadTool”
5. Double-click on “setup”
6. “Application Install Security Warning” click “Install” then “yes”
7. Once the installation setup has completed, double-click on “XCMSetupTool” to start the Opus Downloader tool.
8. **OPTIONAL:** Create a desktop shortcut for the Downloader Tool by right-clicking on “XCMSetupTool”, selecting “Send To”, then “Desktop (create shortcut)”.

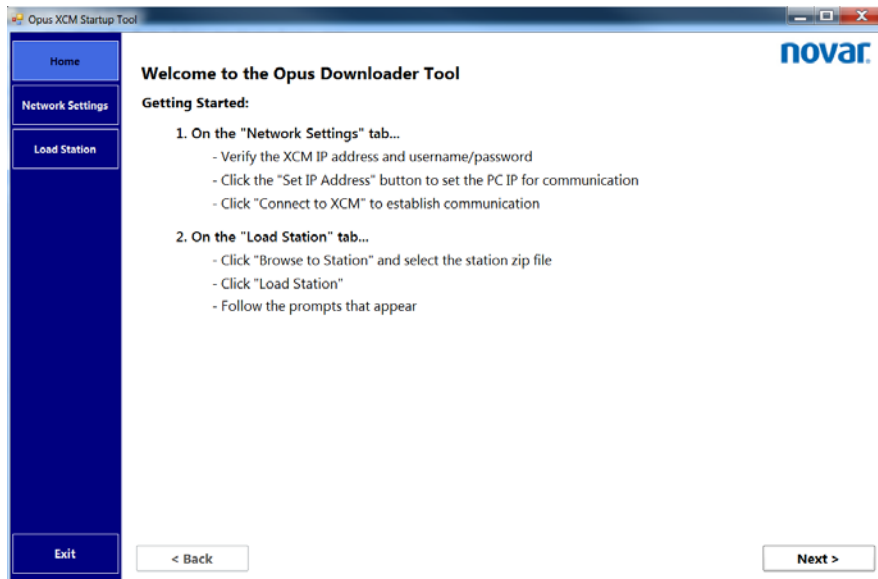
Once installed, the tool is ready for operation and will not need to be re-installed for future versions.

IMPORTANT:



This tool is designed to be run as Administrator. If you do not have administrator rights, you will not be able to change the PC IP address and connect to the XCM.

Station Download Step-by-Step



Navigation Buttons:

- Next** - Advance to the next page
- Back** - Return to the previous page

Menu Tabs:

- Home** - Welcome page
- Network Settings** - Network page
- Load Station** - Load Station page
- Exit** - Close the application

Figure 1: The Home screen

1. Connect your PC/Laptop to the XCM using the Ethernet cable. The Ethernet cable should be plugged into the LAN1 port on the XCM for a new XCM, or LAN2 for an existing XCM.
2. Double-click on “XCMSetupTool” to start the application. The Home screen, shown above, will appear.
 - a. If the “DownloadTool” folder is saved in an alternate location (not C:\DownloadTool), you will be prompted to locate the sw, cleanDist, fullCommissionDistFiles, and platBOGs folders on your computer.
 - b. Navigate to the requested folder, select the folder, and click “ok”.
 - c. Repeat the previous step for each prompt that appears.
3. Click “Next” or select the “Network Settings” tab to advance to the Network Settings page (below).

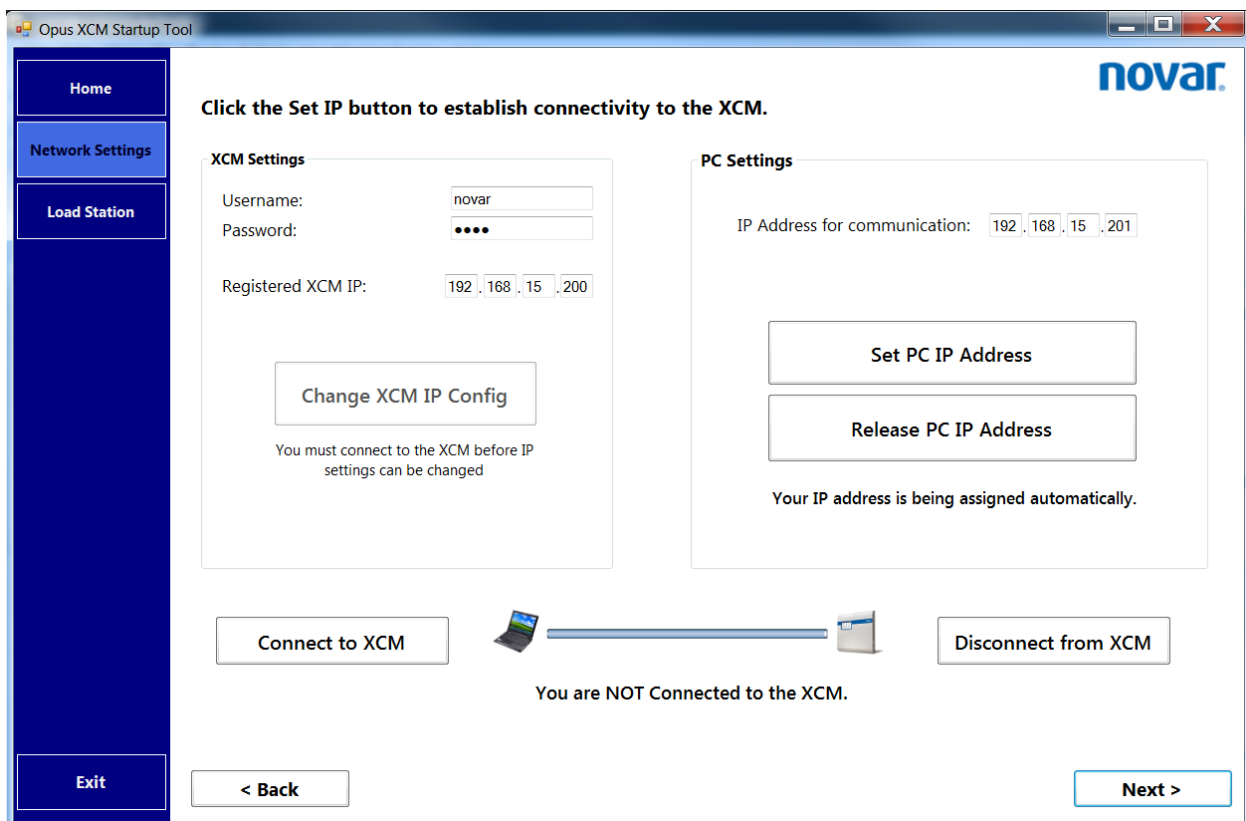
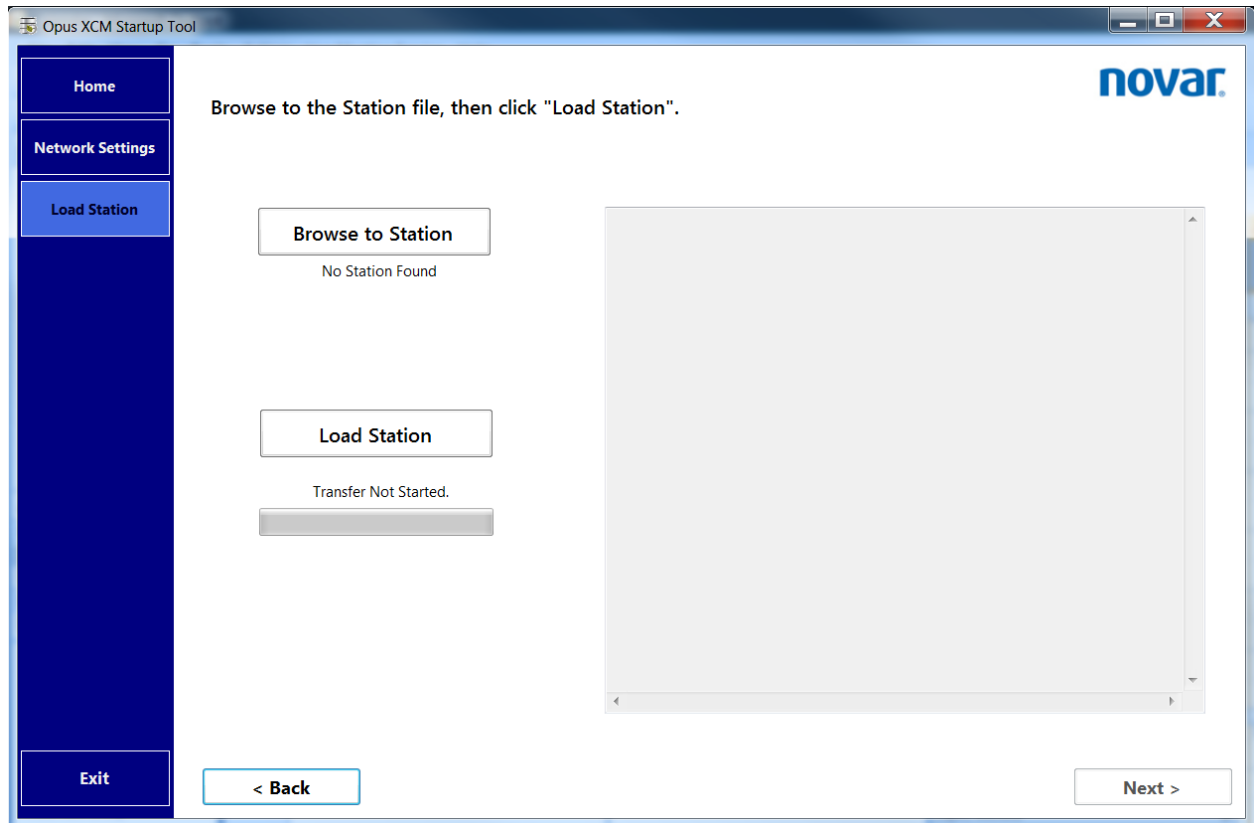


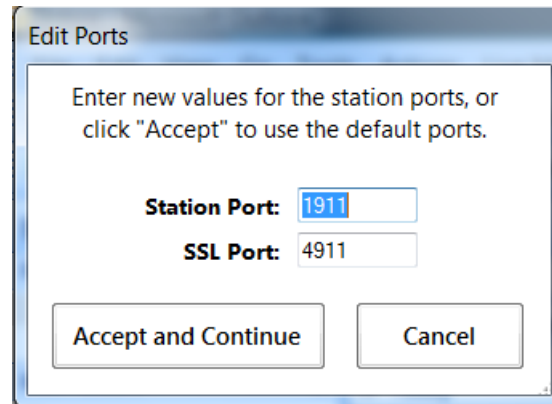
Figure 2: Network Settings screen

4. Fill out the “XCM Settings” section:
 - a. Enter the XCM Username/Password (this is usually Novar/Opus)
 - b. Enter the IP address of the LAN port you are connected to
5. Under “PC Settings”, verify that the last segment of the IP Address for Communication is 1 higher than the XCM IP address (this field will update automatically)
6. Click “Set PC IP Address” to establish a communication channel with the XCM.
7. Click “Connect to XCM” – **this can take up to 15 seconds**

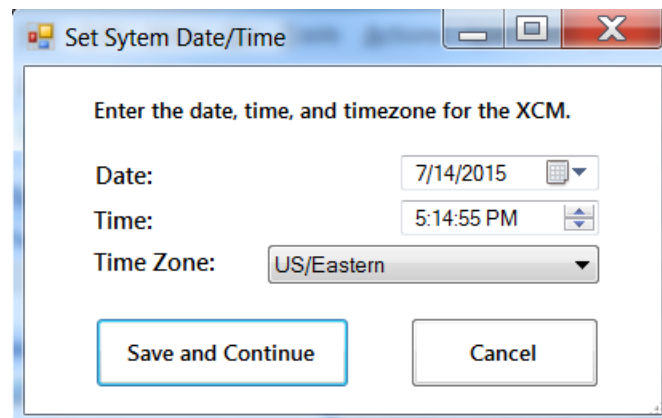
8. Once connected to the XCM, the graphic will display a green arrow and the message below the graphic will change to “You are connected to the XCM”
9. OPTIONAL: To change the XCM IP address configuration before downloading a station, click “Change XCM IP Config”. **After changing the IP address configuration in this manner, the XCM will reboot and be unavailable for communication for approximately 2-5 minutes.**
10. Click “Next” or select the “Load Station” tab to advance to the Load Station page (below).



11. Click “Browse to Station” and select the station distribution file, click “Open”.
12. Click “Load Station” to begin the download process.
13. A prompt will appear asking if you wish to update the station ports. Click “Yes” to set the FoxPort or FoxsPort, or “NO” to default the ports to 1911 and 4911, respectively.



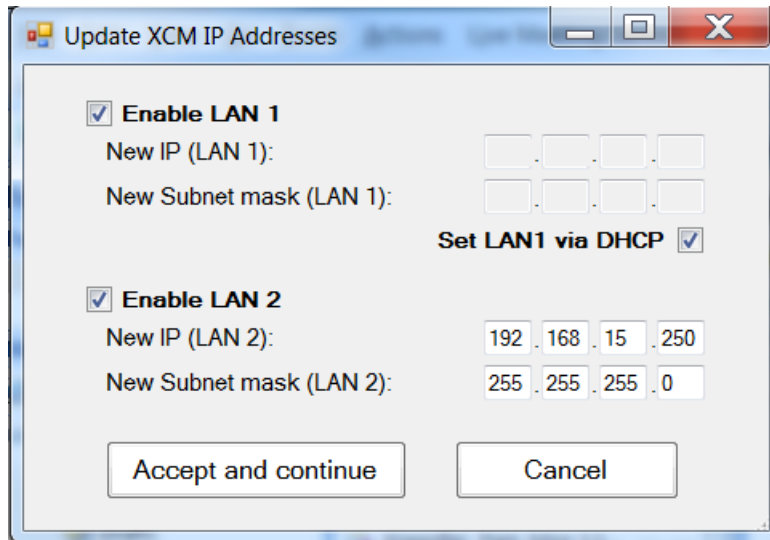
14. If no internet connection is available, a pop-up will appear with the Host ID of the XCM. Contact Novar with the Host ID given in the pop-up and request a license/certificate package.
 - a. A prompt will appear asking you to download licenses and certificates from a file. Click OK.
 - b. Navigate to the license/certificate zip file sent by Novar and click OK.
15. A prompt will appear to change the date, time, and timezone of the station. These values default to the date, time, and timezone of your laptop. Choose the correct date, time, and timezone for the station, then click “Save and Continue”.



16. Next, a prompt will appear asking if you wish to change the IP addresses of the XCM. Click “OK” to change the IP address, or “Cancel” to continue the download process.
 - a. Check “Enable LAN1”
 - i. Check “Set LAN1 via DHCP” if LAN1 should be set via DHCP or enter IP address for XCM
 - b. Check “Enable LAN2” and enter IP address if required
 - c. Click “Accept and Continue”

IMPORTANT:

In order for the XCM to get a network-assigned IP address via DHCP, you must connect the XCM to the network and reboot the XCM after the station download is complete unless XCM is communicating via DHCP prior to download.



17. After the station has been downloaded and the XCM finishes rebooting, a prompt asking if you wish to release the PC IP will appear. Click "OK".
18. Exit the Downloader Tool and wait 15 minutes before testing the station.

Opus™ is a trademark of Honeywell International
Ethernet® is a registered trademark of Xerox Corporation
MODBUS® is a registered trademark of Schneider Electric
Niagara^{AX} is a registered trademark of Tridium
NovarNet® is a registered trademark of Honeywell International

The material in this document is for information purposes only. The content and the product it describes are subject to change without notice. Novar makes no representations or warranties with respect to this document. In no event shall Novar be liable for technical or editorial omissions or mistakes in this document, nor shall it be liable for any damages, direct or incidental, arising out of or related to the use of this document. No part of this document may be reproduced in any form or by any means without prior written permission from Novar.

Copyright © 2015 by Honeywell International, Inc.. All Rights Reserved.

Novar
6060 Rockside Woods Blvd.,
Cleveland, OH 44131
Phone: 1.800.348.1235
www.novar.com