

Verifying the MAC Address in Remote System Files

Introduction

This document explains how to verify that an executive module's Ethernet[®] MAC (Media Access Control) address is properly recorded in a site's remote system files prior to performing a Version or Load Change download. The procedures provided are necessary only if the following conditions apply:

- A version of ESS32 earlier than Version 4.41.2 is being used and an Exec32 device (Lingo[®], Savvy[®], Envoi[®], Envoi/2, Presto[™]) is being configured.
- The executive module has been downloaded with Version 52.40.

NOTE! Executive modules started shipping with Version 52.40 preloaded November 11, 2003.

Verifying a MAC Address in a Remote System

NOTE! This procedure assumes an appropriate communication link (RS-232, Modem, or Ethernet connection) is available to the executive module.

The electronic assemblies of executive modules are shipped with a product information label (Figure 1) applied to the right side or back of the unit. The MAC address assigned to the unit appears in the lower right corner of the label.



Figure 1. Sample product information label showing MAC address (lower right corner)

The following procedure can be used to compare the MAC address assigned to an executive module with the MAC address recorded in remote system files.

Verifying the MAC Address in Remote System Files

Step	Procedure
1	Locate the product information label on the right side of the executive module's electronics assembly.
2	Record the MAC address shown on the label.
3	Install the executive module's electronics assembly on its base according to the installation instructions supplied with the module, apply power, and allow the module to power up.
4	Access the ESS32 Main Menu—Modes of Operation screen.
5	Type 2 (System Format) at the prompt and press enter to access the System Directory.
6	Type the number of the remote system to which the MAC address should be applied at the prompt and press enter to access the System Menu.
7	Type 1 (Modify) at the prompt and press enter to access the Unit Directory.
8	Type 17 (Communication Parameters) at the prompt and press enter to display the Communications Parameters screen.
9	Type the number assigned to the executive module (e.g., type 1 for Unit 1) at the prompt and press enter to display the communication parameters for that module.
10	Press Tab to display the Ethernet settings (Figure 2).
11	Locate the MAC address on the screen and compare it with the MAC address that appeared on the executive module's product information label (the number recorded in Step 2 above). <ul style="list-style-type: none"> ■ If the numbers are the same, verification is complete. No further action is required. ■ If the two MAC addresses are different, perform the Saving the MAC Address in System Files procedure provided below.

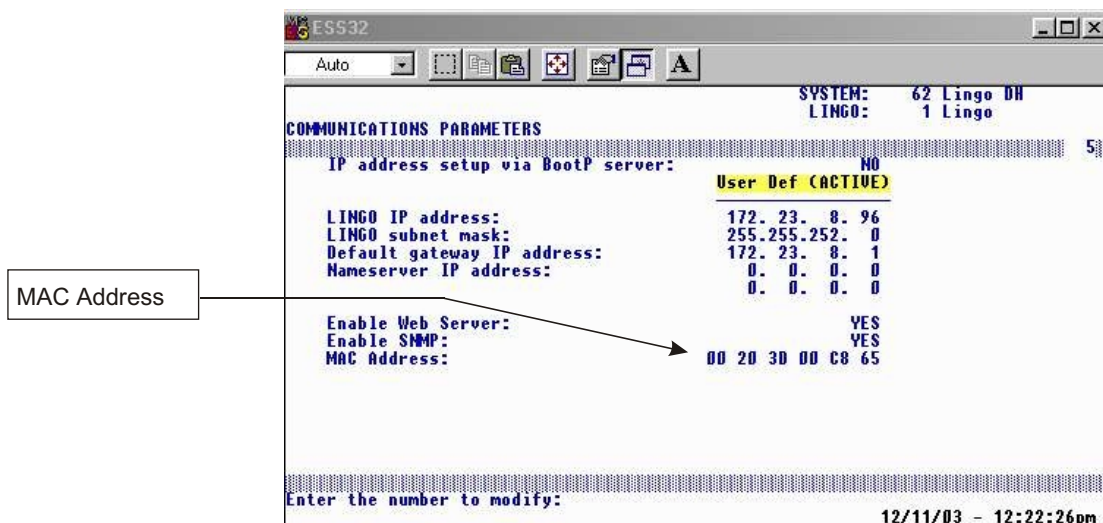


Figure 2. Ethernet settings in the Communications Parameters screen

Saving the MAC Address in System Files

The following procedure only needs to be performed if the MAC address shown on an executive module's electronics assembly product information label does not match the address shown in the remote system's Communications Parameters screen.

Step	Procedure
1	Access the ESS Menu—Modes of Operation screen.
2	Type 4 (ESS Utilities) at the prompt and press enter to access the ESS System Utilities screen.
3	Type 4 (System Diagnostics) and press enter to display the System Diagnostics screen.
4	Type 17 (Unit EEPROM Configuration), press enter , type Y to respond to the "Connect in Configuration mode (Y or N)" prompt, and press enter to display the Unit Configuration screen.
5	Type an appropriate phone number (to connect to the unit) at the prompt and press enter . <ul style="list-style-type: none"> ■ For Ethernet connections, enter the appropriate IP address. ■ For RS-232 connections, type any series of numbers (e.g., 111).
6	Use the keyboard arrow keys to move the cursor to the appropriate connection mode (the default is usually acceptable) and press enter to connect to the system.
7	Type the number assigned to the unit whose settings should be displayed (typically Unit #1, unless accessing a slave) and press enter to connect to the unit and access its Unit Configuration screen. <p style="text-align: center; margin-top: 10px;"> <hr style="width: 80%; margin: 0 auto;"/> NOTE! If the unit does not have a Load Change download, "SYSTEM: UNKNOWN" will appear in the top right corner of the display. If the Unit does have a Load Change download, the system number will be displayed in the top right corner of the display. <hr style="width: 80%; margin: 0 auto;"/> </p>
8	Locate the MAC address in the display. <ul style="list-style-type: none"> ■ The address is a hexadecimal value (combination of letters and numbers) located below selection # 7.
9	Make sure the MAC address in the display matches the MAC address that appears on the executive module's electronics assembly product information label. <p style="text-align: center; margin-top: 10px;"> <hr style="width: 80%; margin: 0 auto;"/> NOTE! If they do not match, contact Novar's Customer Service at 800.348.1236 for assistance. <hr style="width: 80%; margin: 0 auto;"/> </p>

continued

Verifying the MAC Address in Remote System Files

Step	Procedure
10	<p>Retype one of the following settings, entering the identical information and press enter to exit the screen:</p> <ul style="list-style-type: none">■ IP address setup via BootP server■ Unit IP address■ Unit subnet mask■ Default gateway IP address■ Nameserver IP address <p>When ESS32 exits the screen, the value entered will be detected as a change to the EEPROM configuration data, and the user will be prompted to write information to a system.</p> <p>If the unit does not have a Load Change download, the operator will be prompted to enter a system number. If the unit does have a Load Change download, the program will automatically record all of the settings into the remote system files of the system indicated in the upper right corner of the display.</p>
11	<p>Perform the procedure provided in the “Verifying a MAC Address in a Remote System” section of this document to verify that the proper MAC address has been recorded in the remote system files.</p>

Lingo®, Savvy®, and Envoi® are registered trademarks of Novar.
Presto™ is a trademark of Novar.
Ethernet® is a registered trademark of Xerox Corporation.

The material in this document is for information purposes only. The contents and the product it describes are subject to change without notice. Novar makes no representations or warranties with respect to this document. In no event shall Novar be liable for technical or editorial omissions or mistakes in this document, nor shall it be liable for any damages, direct or incidental, arising out of or related to the use of this document. No part of this document may be reproduced in any form or by any means without prior written permission from Novar.

Copyright © 2007 by Novar. All Rights Reserved. Printed in the U.S.A.

Novar; 6060 Rockside Woods Blvd., Cleveland, OH 44131
Tel.: 800.348.1235 www.novar.com