

Applying an IP Address to Executive Devices

IP settings applied to the system files, EEPROM files, and version files for Novar’s Executive devices (Savvy[®], Lingo[®], Lingo SE, Lingo XE, Envoi[®], and RC2XE executive modules) must match for effective communications to take place. Addresses applied via the Unit Configuration screens in Novar’s Engineering and Support System software (ESS32, Version 4.40.X or later) will be applied automatically to all of the appropriate locations. Addresses can also be viewed and modified in an executive module’s touchscreen, but they will not be applied to all locations until the operator accesses the ESS32 Unit Configuration screen to pull them into ESS32 and save them.

This document explains how to configure IP settings for Exec32 devices and XE devices by both methods, write the settings to the appropriate system, and confirm the settings.

Configuring IP Settings for Exec32 Devices via a Touchscreen

An executive module’s touchscreen provides an easy way to verify or modify an IP address. The following procedure explains how to access the IP settings and, if necessary, modify them. IP settings configured via the touchscreen will not be written into a system until the operator accesses the Unit Configuration screen and saves the settings in the final step of the procedure.

Step	Procedure
1	Power up the executive module.
2	Press any letter in the logo in the log-in screen (Figure 1) to display an access code entry screen. <i>continued</i>

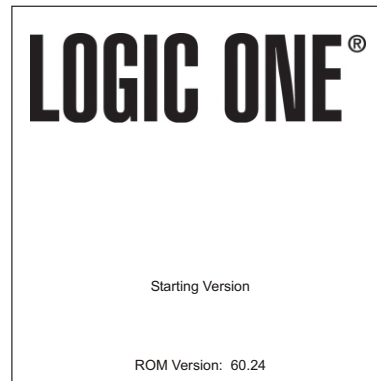


Figure 1. Touchscreen log-in screen

Applying an IP Address to Executive Devices

Step	Procedure
3	Enter a valid access code (Default: 1234) in the Access Code screen (Figure 2) and press enter to display the Panel Setup Menu screen (Figure 3).
4	Press the LAN Setup button in the Panel Setup screen to display the LAN Setup Parameters (Figure 4). <i>continued</i>

Figure 2. Access code entry screen

Figure 3. Panel Setup Menu

Figure 4. LAN Setup Parameters

Step	Procedure
5	Press the number that appears in the Ethernet IP field to display an IP address entry screen (Figure 5).
6	Enter the IP address and press enter . NOTE! The Ethernet IP, Gateway IP, and Subnet Mask addresses can all be set in a similar manner.
7	Follow any prompts that appear.
8	Press Save and exit . NOTE! Users must press Save to save the IP address that was entered. There is no prompt to save when the user presses exit .
9	Complete Steps 2 through 10 of the procedure provided in “Configuring IP Settings via ESS32” in this document to write the settings to the appropriate system.

Enter the ethernet IP:

010.190.000.064

0 1 2 3 4 .

5 6 7 8 9 BKSP

ENTER CLEAR

Figure 5. IP address entry screen

Configuring IP Settings for XE Devices via a Touchscreen

The configuration of Novar's XE devices establishes communications methods, touchscreen behavior, and various other settings that tell the device how to operate. The device can be accessed for network configuration from the local touchscreen or via ESS32. The remainder of the configuration settings are set through the ESS32 configuration screens.

The following procedure can be used to set up the XE device and configure network addresses from the local touchscreen.

NOTE! The procedure assumes that the device has been installed in an appropriate location and correctly wired. The local touchscreen is displayed during the power-up sequence.

Step	Procedure
1	Power-up the XE device. <ul style="list-style-type: none">■ If the device has no kernel or version loaded into it or has a kernel but no version loaded into it, the display will be blank (no activity) for about 25 seconds before the touchscreen is activated. The display will include the Novar logo and version information.
2	Press the logo to advance to a setup screen (Figure 6) offering the following options: <ul style="list-style-type: none">■ Calibrate Touch Panel■ Unit EEPROM Configuration■ Exit (leaves the menu; the control program continues to load) If a kernel and/or version has been loaded into the device, the user can access the setup screen via the Setup option at the top of the touchscreen. <p style="text-align: right;"><i>continued</i></p>

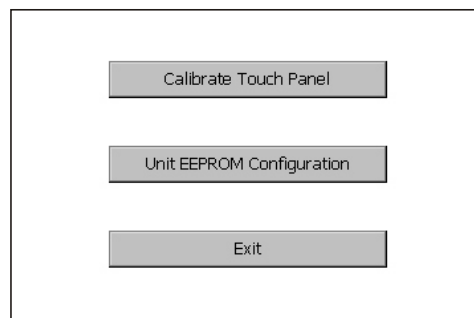


Figure 6. Setup Menu

3	<p>Press the Unit EEPROM Configuration option to access the Unit EEPROM Configuration screen, which contains four tabs that show the network settings.</p>
4	<p>Enter the password at the prompt.</p> <ul style="list-style-type: none"> ■ If the executive only has a core or kernel download, the default password (1234) should be used. ■ If the executive has a version download, the super user password must be used.
5	<p>Click on the TCP/IP tab to display it (Figure 7). The TCP/IP tab offers two options:</p> <ul style="list-style-type: none"> ■ If the Specify IP address option is selected, the tab displays the device's user-defined IP address, default gateway address the device will use while communicating with remote locations, the subnet mask address , the primary DNS server address, and secondary DNS server address. ■ If the Obtain IP address via DHCP option is selected, IP address information will be obtained via Dynamic Host Configuration Protocol. If this option is selected, the background behind the numbers that populated the screen for the Specify IP address option will turn gray. If the user wants to see what IP information was obtained via DHCP, the user can press the View Current option.
6	<p>Select the appropriate option in the TCP/IP display; verify the accuracy of the addresses displayed and, if necessary, change them; and click on save/exit to save the settings and exit the display.</p> <ul style="list-style-type: none"> ■ To change an address, click in the appropriate field and type in a different address.

The screenshot shows a configuration window with four tabs: Hardware, TCP/IP (selected), Network, and Local Interface. Under the TCP/IP tab, there are two radio button options: 'Obtain IP address via DHCP' (unselected) and 'Specify IP address:' (selected). To the right of these options is a 'View Current' button. Below the 'Specify IP address:' option, there are five text input fields with the following values: IP Address: 10.15.60.3, Default Gateway: 10.15.60.0, Subnet Mask: 255.255.0.0, Primary DNS Server: 0.0.0.0, and Secondary DNS Server: 0.0.0.0. At the bottom left is a 'Ports & Services' button, and at the bottom right are 'Save/Exit' and 'Cancel' buttons.

Figure 7. TCP/IP tab

Configuring IP Settings via ESS32

NOTE! *Network Configuration Information for Network Administrators*, a more detailed document containing instructions for special network configurations is available in the Documents folder on Novar's Software Package CD.

The procedure provided below explains how to configure IP settings in ESS32 manually or via BootP Server. If the IP address is to be applied via BootP Server, the person performing the procedure will need to contact the system administrator to obtain the IP settings.

Step	Procedure
1	Power-up the unit. <ul style="list-style-type: none">■ A green light will be visible on the 10Base-T connector. It indicates that the link to the network is good.
2	Access the ESS32 Menu—Modes of Operation screen, select 4 (ESS Utilities), and press enter .
3	Select 4 (System Diagnostics) and press enter .
4	Select 17 (Unit EEPROM Configuration) and press enter .
5	Select Y (Yes) at the “Connect in configuration mode (Y or N)?” prompt and press enter .
6	Type the appropriate access number in the NAME/NUMBER field and press enter : <ul style="list-style-type: none">■ If connecting with a modem, enter the phone number.■ If connecting with RS-232 direct-connect, enter any number (e.g., 111). <hr/> <p>NOTE! RS-232 does not apply to the Lingo XE. A USB device would be used.</p> <hr/> <ul style="list-style-type: none">■ If connecting by Ethernet[®], enter the Unit's IP number.
7	Use the cursor arrow keys to select the appropriate port and method and press enter twice.
8	Type the appropriate unit number (usually 1) at the prompt and press enter to display the Unit Configuration screen.

continued

Step	Procedure
9	<p>Complete the following steps, depending on how the IP address is to be applied:</p> <ul style="list-style-type: none"> ■ To apply the IP address manually or via touchscreen: <ul style="list-style-type: none"> — Make sure the BootP Server option is set to “No.” — Follow the prompts to set the IP settings. — Check the settings to make sure they are correct. — Press enter. ■ To apply the IP address via BootP Server <ul style="list-style-type: none"> — Make sure the BootP Service option is set to “Yes.” — Check the settings to make sure they are correct. — Press enter. <p>A popup screen containing the warning shown in Figure 8 will appear.</p> <div style="border: 1px solid black; padding: 5px; margin: 10px 0;"> <pre style="font-family: monospace; font-size: 0.9em;"> WARNING The data displayed on this screen will be written to the EEPROM and will be used by the controller. This configuration should also be written to disk to update the system files with the current configuration. EXIT and write changes to system 9000 EXIT and write changes to another system EXIT and write changes to NO system CONTINUE modifying setup ESC <NO changes written to EEPROM or system files></pre> </div> <p>Figure 8. Popup warning</p>
10	<p>Use the cursor arrow key to select the appropriate option in the popup screen and press enter:</p> <ul style="list-style-type: none"> ■ Option 1: The user exits the system. The configuration settings will be written to the system indicated if the system is accessible from the user’s PC. ■ Option 2: The user exits the system. The configuration settings will be written to a system other than the one to which the user is connected. The system must be accessible from the user’s PC. ■ Option 3: The user exits the system. The changes are not written to a system. ■ Option 4: The user is put back into the Unit Configuration screen so additional settings can be modified. Changes already entered still appear on the screen. ■ Press Esc allows the user to exit with no changes being written to EEPROM or system files.

Once the settings have been set, the user should confirm that they have been written to the system.

Confirming IP Settings

The following procedure can be used to confirm the accuracy of the configured IP settings.

Step	Procedure
1	Access the ESS32 Menu—Modes of Operation screen.
2	Select 2 (System Format) and press enter .
3	Select the appropriate system and press enter .
4	Select 1 (Modify) and press enter .
5	Select 17 (Communication Parameters) and press enter .
6	Select the appropriate executive module, typically #1, and press enter .
7	Press Tab to view the IP parameters.
8	Verify that the correct IP settings are displayed.

Logic One[®], Savvy[®], Lingo[®], and Envoy[®] are registered trademarks of Novar.
Ethernet[®] is a registered trademark of Xerox Corporation.

The material in this manual is for information purposes only. The contents and the product it describes are subject to change without notice. Novar makes no representations or warranties with respect to this manual. In no event shall Novar be liable for technical or editorial omissions or mistakes in this manual, nor shall it be liable for any damages, direct or incidental, arising out of or related to the use of this manual. No part of this manual may be reproduced in any form or by any means without prior written permission from Novar.

Copyright © 2006 by Novar. All Rights Reserved. Printed in the U.S.A.

Novar, 6060 Rockside Woods Blvd., Cleveland, OH 44131
Tel.: 800.348.1235 www.novar.com