

xcm.LCD User Guide

Table of Contents

Introduction.....	1
Screens & Elements	2
User Access.....	4
Model & Part Numbers	8

Introduction

As part of Novar’s Opus™ Energy Management System, the xcm.LCD uses Novar’s patent pending EZ-Nav™ technology to provide real-time status information on an easy-to-use, wall-mounted touch-screen LCD. The xcm.LCD has a 480 x 272, High Definition, 24-bit Full Color backlit LCD display. It is also available in a 16-level Extended Temperature Gray-Scale Display, both have an 8 square inch viewing area.

The xcm.LCD has customizable user screens, multi-language capability, and permission-based access control. With these features it provides site personnel the ability to quickly and conveniently access setpoint changes, local alarm data, and other system information.



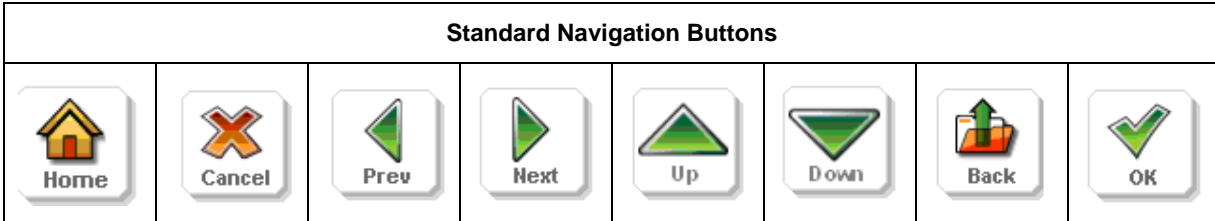
This document is the User Guide for functionality, display adjustments, and general use of the Novar xcm.LCD. For further instructions and updated material, go to www.novar.com/manuals to download the following:

- *xcm.LCD Software Installation & Update Instructions*
- *xcm.LCD Mounting & Wiring Instructions*
- *xcm.LCD Advanced Programming Guide*

Screens & Elements

Screens are fully configurable with pre-designed elements and may vary from those shown below. They are built using a combination of elements.

Navigation Buttons



Home Screen

The Home Screen has top level buttons and associated icons for navigation to deeper screen sets. The Home screen will vary in the types of viewable icons, depending on the users required access. With Novar's EZ-Nav™ technology, a 'Home' icon is on every page, for quick return to the Home Screen from anywhere in the navigation.

Navigation List Screen

The Navigation List Screen shows the various zones and floors with summary data values on the buttons.

Data List Screen

The Data List Screen contains all data available for each section selected. This screen also includes a list of data buttons with summary data values and read-only (gray text) or editable (green text) points. For grayscale xcm.LCD units, the read-only points are displayed with a lighter shade of gray.

Data Editing Screen

The Data Editing Screen can be accessed directly by selecting an editable point on the Data List Screen. This page allows editing data values via the EZ-Nav up and down arrows for simplified usability.

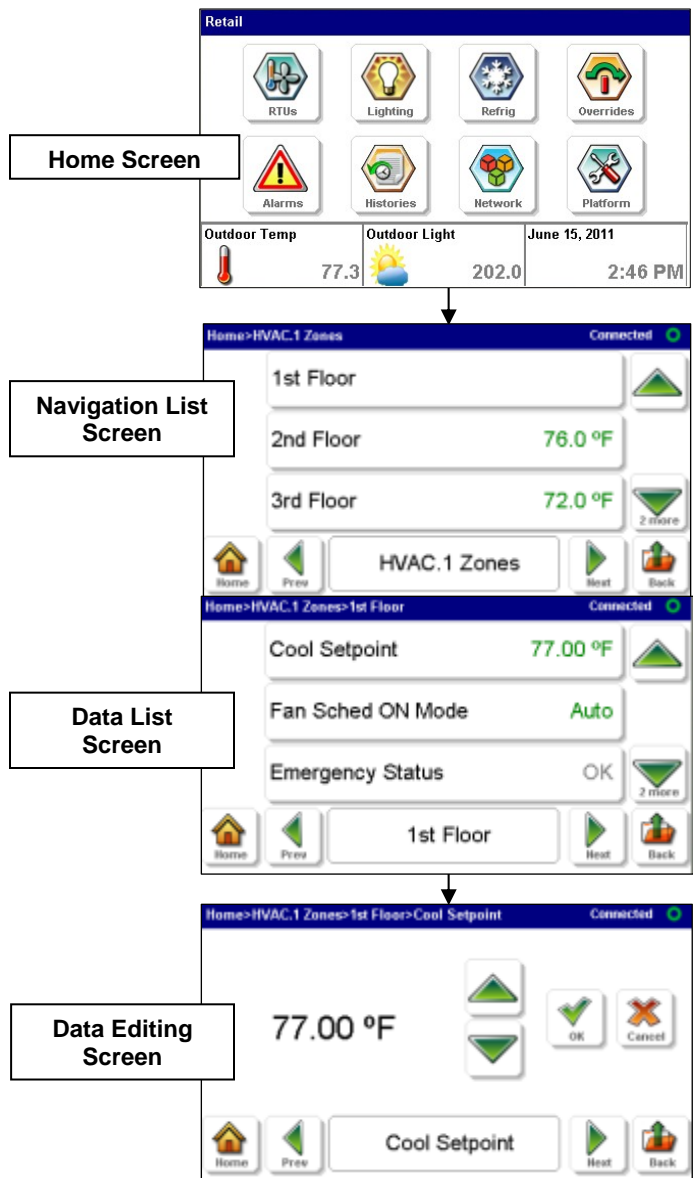


Figure 1. Hierarchy of Screens

Typical Screens

Other typical screens that may or may not be used include the following.

Override Screen

The Override Screen contains the following features:

- Supports timed override (Novar-specific)
- Buttons directly modify Niagara enumeration points when pressed
- Access code not required to modify

Alarm Screens and Alarm Details Screen

The Alarm button from the home screen provides a menu that offers active or time-filtered historical alarms

The Active Alarm Screen contains the following features:

- List of current active alarms
- Sort and filter for the alarm list
- Shows source and time of occurrence
- Access to alarm details

The Historical Alarm Screen contains the following features:

- List of historical alarms
- Sort and filter for the alarm list
- Alarm rollup with historical expansion
- Shows source and time of return-to-normal
- Access to alarm details

The following selections are used to view and customize the basic behavior of the display (System information, back-light adjustment, IP address, etc.). Press the **Platform** button to access the settings.

Alarm Details Screen contains the following features:

- Source point and present value
- Time of occurrence plus number of occurrences
- Alarm settings
- Acknowledge state and time
- Count of alarm events over time
- Messages and notes

History List Screen

The History List Screen provides a menu of history points that may be viewed through the xcm.LCD display. Each history is available through its control entity and may be viewed in either graphical or tabular format.

The graphical display contains the following features:

- Auto-scaling
- Pre-formatted time filters
- Multi-level zoom
- Point-touch for timestamp
- Supported by EZ-Nav™ technology
- Toggle to tabular format
- Local caching for rapid viewing

The tabular display contains the following features:

- Auto-scaling
- Pre-formatted time filters
- Gesture recognition for page navigation
- Swipe-and-hold for direct page access
- Supported by EZ-Nav™ technology
- Toggle to graphical format
- Local caching for rapid viewing

Network Navigation Screen

The Network Navigation Screen provides a direct view of configured networks, devices, and associated inputs and outputs. This feature is designed to automatically scan the network hierarchy and build a set of easily navigated display screens. The auto-configured displays include the following features:

- Listing of configured networks (BACnet, NovarNet, Spectrum, etc.) with network status and device count
- Listing of configured device's (local controllers) with device status and address
- Listing of each device's inputs and outputs with device status and current value (input reading or output state)
- Button-style menu listings (each list item is a selectable button)
- Timed-override and cancel of selected outputs (depending on controller type)
- Time-remaining countdown for overridden control points
- Automatic status updates (network, device, and I/O)
- All displays are supported by Novar EZ-Nav

User Access

All adjustments within the Display Settings require user authentication.

The default password for changing any of the Platform settings is 9999.

NOTE!



The default password is only valid if the device is in communication failure (Comm Fail).

If the device is connected (communicating to the Opus system), then passwords are dependent on those assigned within Opus Supervisor. (Please consult your system engineering documentation for the applicable password).

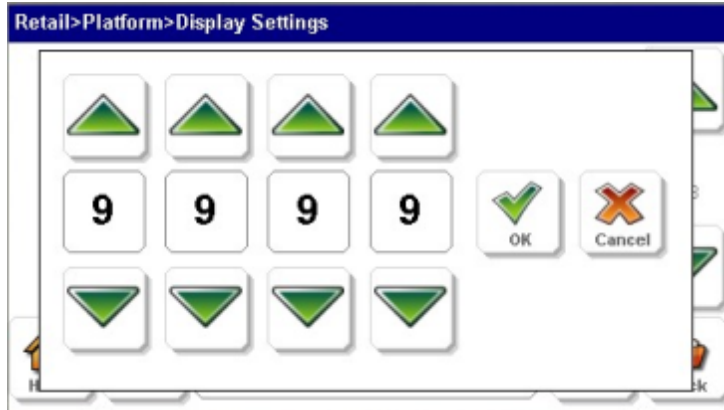


Figure 2. Typical Log-in screen

The following selections are used to view and customize the basic behavior of the display (System information, back-light adjustment, IP address, etc.). Press the **Platform** button to access the settings.

Platform

The Platform button is where all administrative selections, settings, and preference changes can be made.

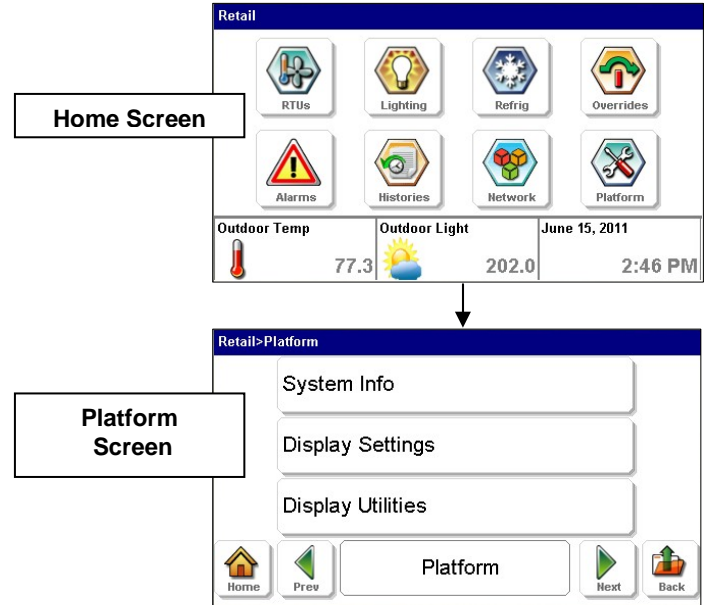


Figure 3. Platform

System Info

The System Info selection provides basic information about the display and the xcm it is connected-to. It includes:

1. Display software version
2. Display OS version
3. Display serial number
4. Opus software version
5. Niagara-AX software version
6. xcm LAN 1 IP Address
7. xcm LAN 2 IP Address

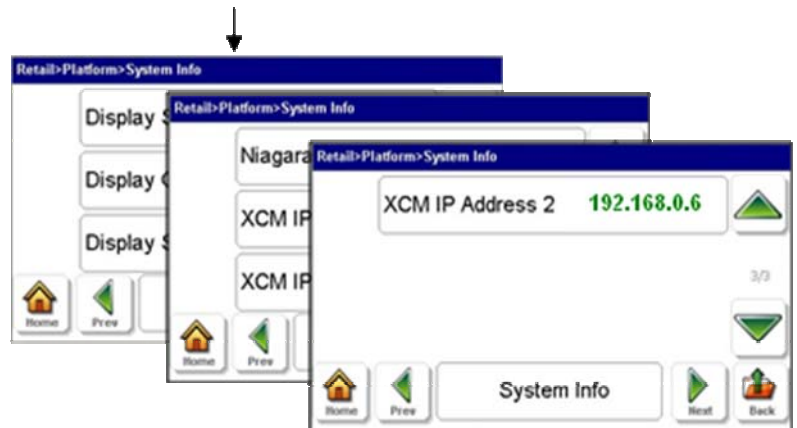


Figure 4. System Info

Display Settings

The following can be viewed and or modified from the Display Settings screen:

- Contrast (Only applicable to Grayscale)
- Brightness
- Login Timeout
- Alarm Blink (see note below)
- Alarm Blink Mode (see note below)
- Language (Release 1.0 and 2.0 only support English)
- Network Address
- Button Size

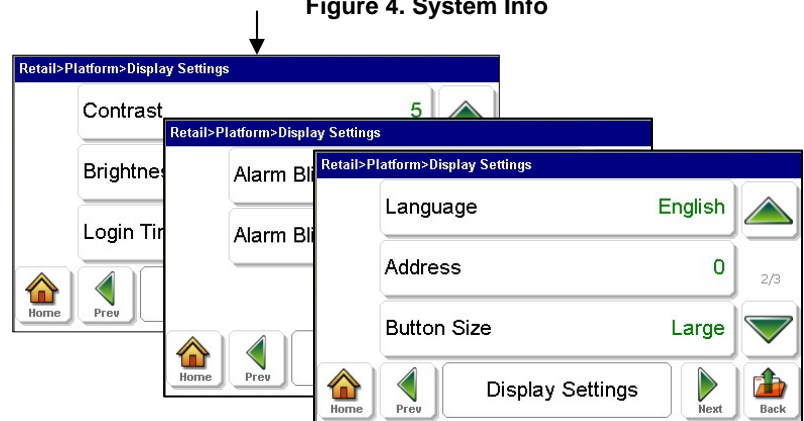


Figure 5. Display Settings

NOTE:

The xcm.LCD back-light may be configured to blink during back-light-dim mode to alert users to alarms on the station. The mode may be set to blink continuously or to turn on back-light but do not blink. Blinking is silenced by viewing the active alarm list.

Display Utilities

The Display Utilities selection from the Platform Screen allows access to the following:

- Logout
- Clean Display
- Touch Calibrate
- Upgrade OS
- Upgrade Software
- Restore Factory Defaults
- Software Verify

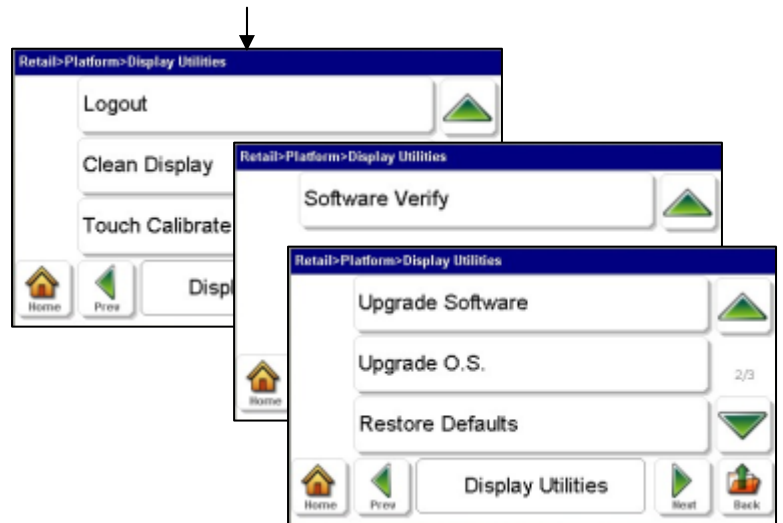


Figure 6. Display Utilities

Model & Part Numbers

The table below provides the part numbers that should be used to order the necessary Novar parts.

Product	Part No.
▪ xcm.LCD Color Display	XCM-LCD-C
▪ xcm.LCD Gray-Scale Display	XCM-LCD-G
▪ xcm.LCD Cover Plate Assembly	50028399-001
▪ WIR-1010 Two-conductor shielded communications cable (Beldin 8761 equivalent)	709001000

Opus™ and EZ-Nav™ are registered trademarks of Honeywell International

The material in this document is for information purposes only. The content and the product it describes are subject to change without notice. Novar makes no representations or warranties with respect to this document. In no event shall Novar be liable for technical or editorial omissions or mistakes in this document, nor shall it be liable for any damages, direct or incidental, arising out of or related to the use of this document. No part of this document may be reproduced in any form or by any means without prior written permission from Novar.

Copyright © 2011 by Honeywell International, Inc.. All Rights Reserved.

Novar
6060 Rockside Woods Blvd.,
Cleveland, OH 44131
Phone: 1.800.348.1235
www.novar.com