

Tracking Touchscreen & Web Browser System Changes

Introduction

This document explains how to access a Change Log Summary in Novar’s Engineering and Support System (ESS32) and iScope® Graphic Infosystem software. The log can be used to track system changes made via a Lingo® SE or Refrigeration Controller (RC²) touchscreen or a Web browser. It shows what was changed in the system, when, and by whom. This feature is only available in ESS32 Version 4.40 or greater, iScope Version 2.22 or greater, and in Lingo SE and RC² Version 60.24 or greater.

Accessing the Change Log Summary in ESS32

The ESS32 Change Log Summary screen contains a log of the changes that have been made to a system, indicating the date, time, user, name of the parameter changed, and the new value. The following procedure can be used to access the log.

Step	Procedure
1	Access the ESS Menu—Modes of Operation screen.
2	Select 1 (Network Monitoring) and press enter .
3	Select the appropriate system and press enter to access the Unit Directory.
4	Select the appropriate executive module in the Unit Directory and press enter to access the Function Menu.
5	Select one of the following options and press enter to access the Change Log Summary screen: <ul style="list-style-type: none"> ■ Lingo SE: Option 16 ■ RC²: Option 18

Once the log is displayed, the keyboard arrow keys can be used to move the cursor up or down the list of changes to highlight each. To display more detail about a change, the user must highlight it and press **X**. The detail screen shows:

- Record identification number
- Date
- Time
- User (name associated with the local access code recorded in ESS32)
- IP Address
 - If the change was made via a touchscreen, the IP address will always be 127.0.0.0.
 - If the change was made via a browser, this field will be populated with the IP address of the user’s PC.

- Customer identification
- System number and name
- Unit (executive module) number and name
- Field type
- Item number and name
- Parameter name
- Status (S = change successfully made; F = change not successful)
- Old value
- New value

To return to the Change Log Summary screen, the user presses **Esc**. To return to the Function Menu, the user presses **Esc** again.

Accessing the Change Log Summary in iScope

The following procedure can be used to access the Change Log Summary in iScope. It contains the same information that appears in the ESS32 summary.

Step	Procedure
1	Launch the iScope application and select the appropriate system to display the Menu Tree.
2	Select the following options to display the Change Log Summary screen (Figure 1): <ul style="list-style-type: none"> ■ Unit Directory option ■ The appropriate unit (executive module) ■ Touchscreen/Browser Change Log option ■ Monitor option

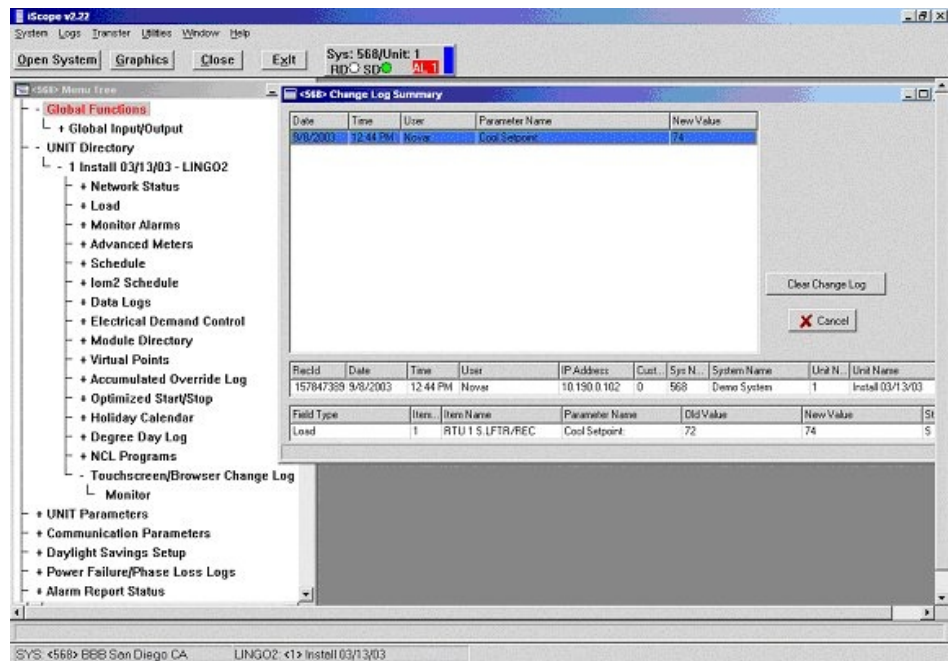


Figure 1. iScope Menu Tree and Change Log Summary screen

The primary window in the screen displays a log of the changes that have been made, including date and time each change was made, user's name (as associated with the access code in ESS32), name of the parameter changed, and the new value.

If the user clicks on one of the logged items, fields at the bottom of the screen provide more detailed information about the changes made.

The screen also offers a **Clear Change Log** option that can be used to clear the log and a **Cancel** option that can be used to exit the screen without making any changes.

Lingo® and iScope® are registered trademarks of Novar.

The material in this document is for information purposes only. The contents and the product it describes are subject to change without notice. Novar makes no representations or warranties with respect to this document. In no event shall Novar be liable for technical or editorial omissions or mistakes in this document, nor shall it be liable for any damages, direct or incidental, arising out of or related to the use of this document. No part of this document may be reproduced in any form or by any means without prior written permission from Novar.

Copyright © 2007 by Novar. All Rights Reserved. Printed in the U.S.A.

Novar; 6060 Rockside Woods Blvd., Cleveland, OH 44131
Tel.: 800.348.1235 www.novar.com

This page intentionally left blank.